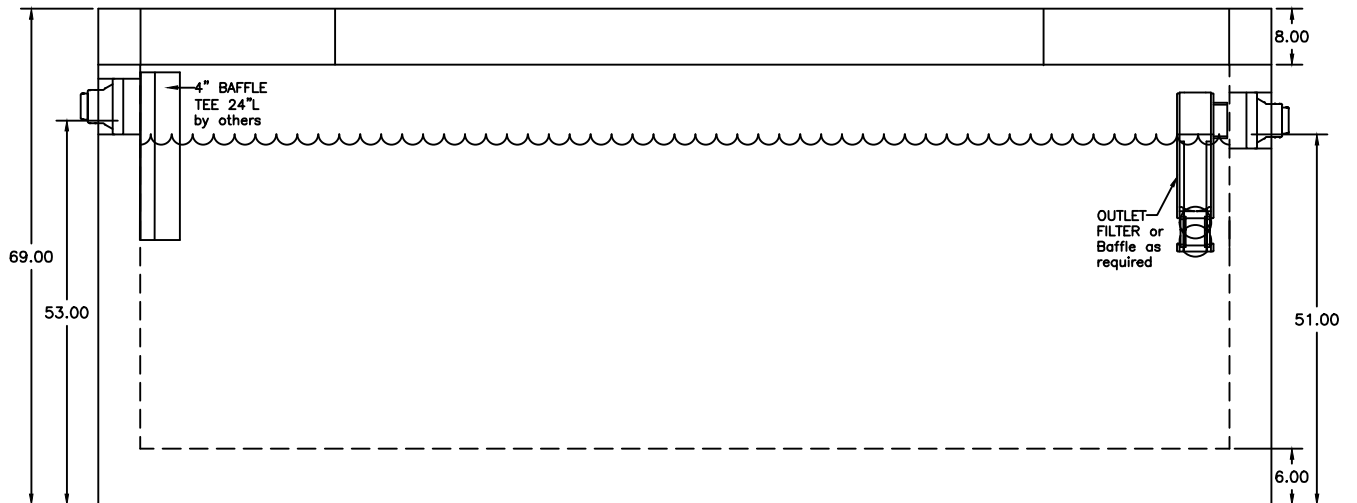
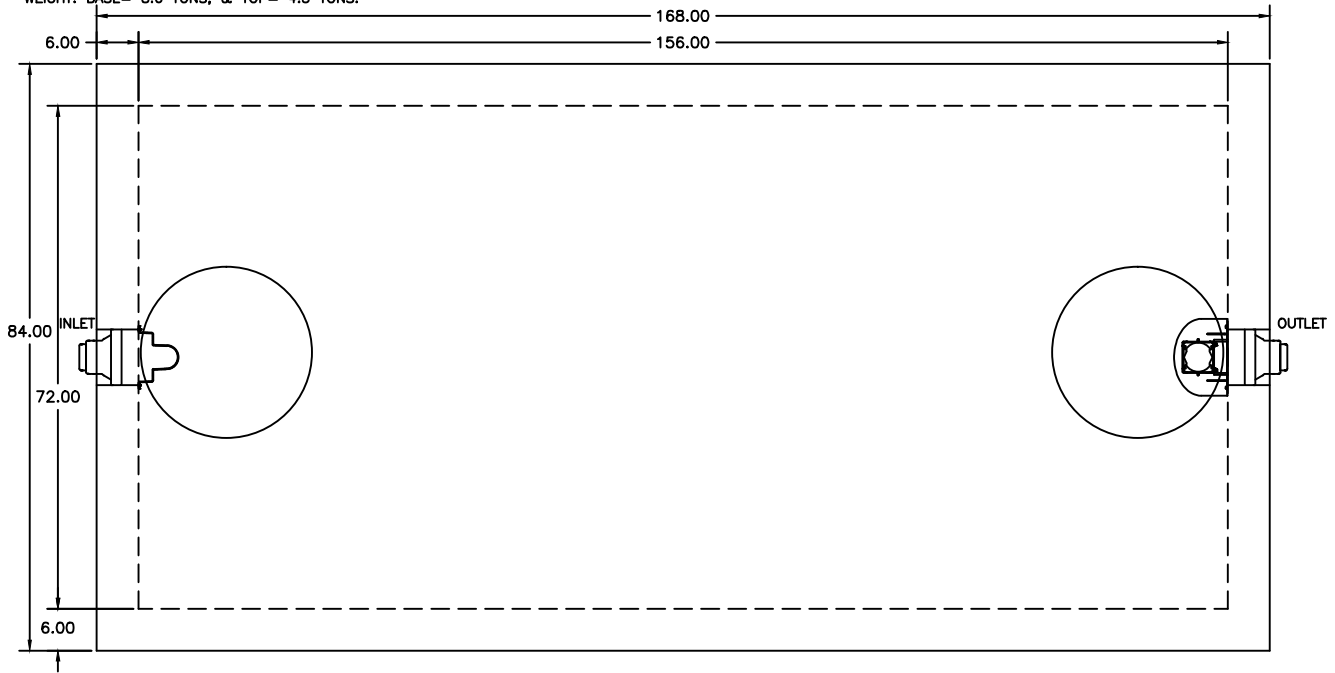


**NOTES:**

1. TRAFFIC BEARING - MAXIMUM EARTH COVER 5".
  2. MINIMUM CONCRETE STRENGTH = 4,500 PSI @ 28 DAYS.
  3. REINFORCING PER ASTM A185 MIN. 3/4" COVER.
  4. REINFORCEMENT: #5 REBAR 12" OCEW WALLS & BOTTOM, #5 REBAR 6" OCEW TOP ADDITIONAL #5 REBAR AROUND OPENINGS ALL REBAR GRADE 60.
  5. TOP SLAB SEALED W/ BUTYL ROPE MASTIC.
- WEIGHT: BASE= 8.6 TONS, & TOP= 4.3 TONS.



FRANKLIN PRECAST  
 20 PARK DRIVE  
 FRANKLIN, NEW JERSEY 07416  
 www.franklinprecast.com

pH: (973) 827-7563  
 Fax: (973) 827-4746  
 sales@franklinprecast.com



**DESCRIPTION:** FRANKLIN PRECAST - TRAFFIC H-20  
 2,000 GAL. HEAVY DUTY TANK

**SCALE:** NOT TO SCALE

**DRAWN BY:** AK

**PART #**  
 2000 GAL.  
 HD TANK

**DATE:** 3/21/2017

**CHECK BY:** AY

THIS DRAWING IS THE PROPRIETARY PROPERTY OF FRANKLIN PRECAST. REPRODUCTION, DISCLOSURE OR USE OF ANY PART OF THIS DRAWING OR ANY INFORMATION THEREIN IS EXPRESSLY PROHIBITED WITHOUT PRIOR WRITTEN CONSENT OF FRANKLIN PRECAST.