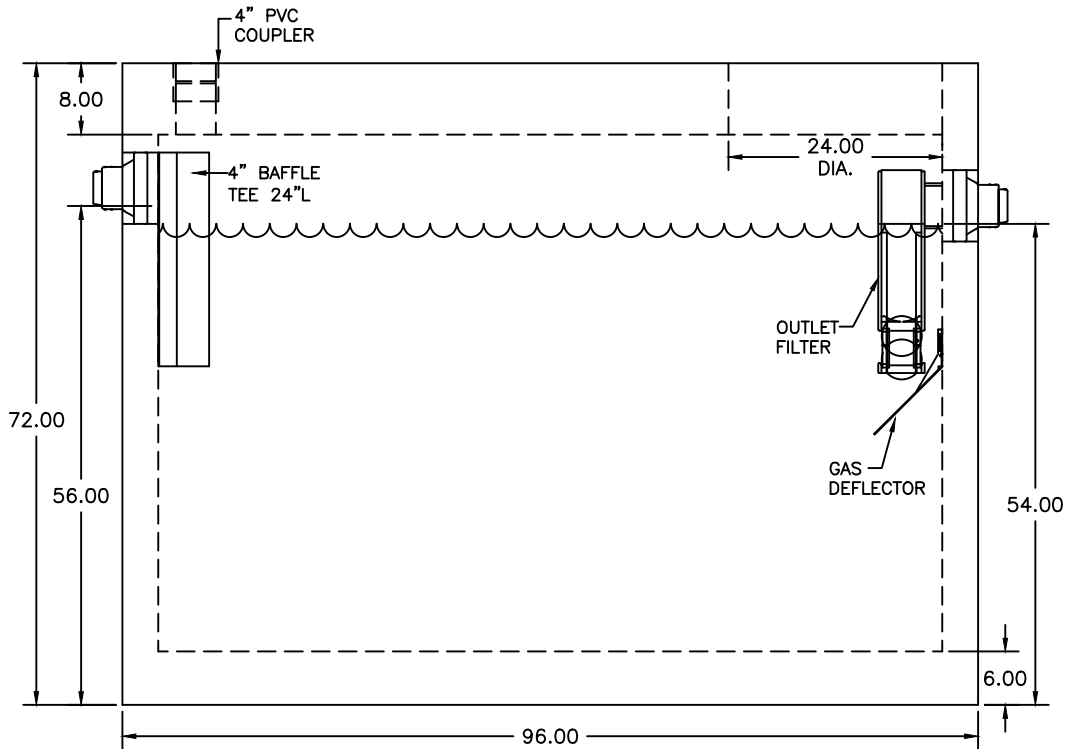
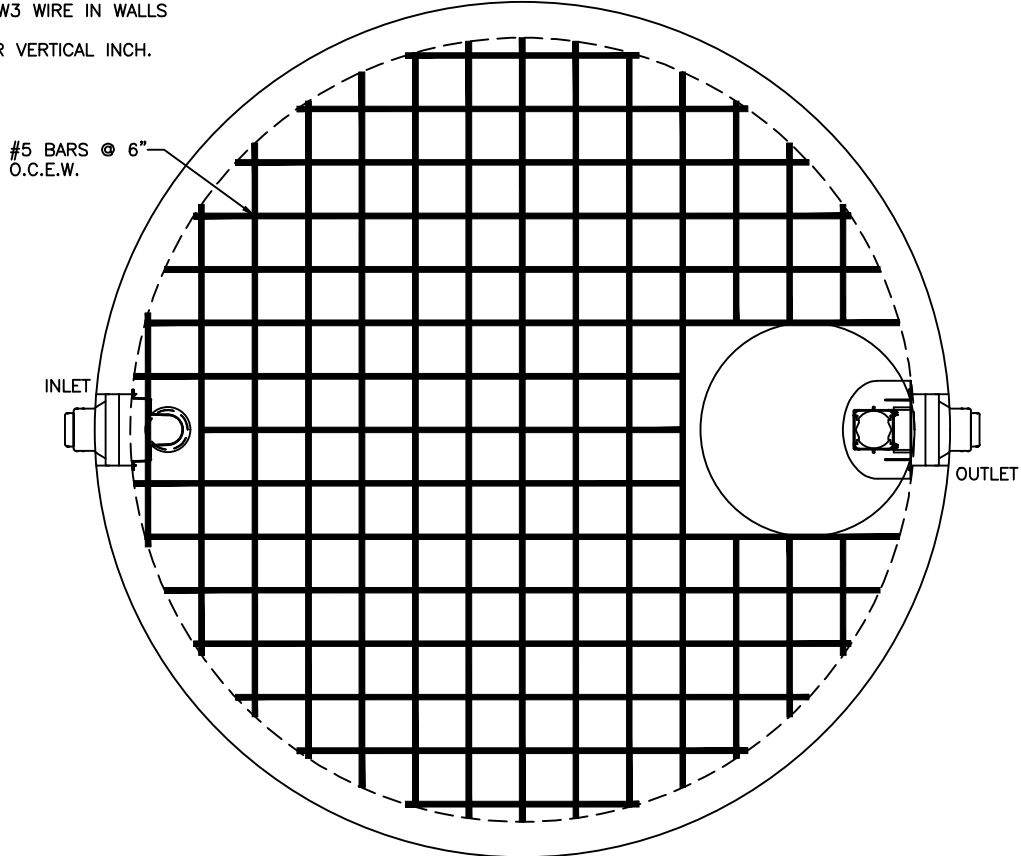


NOTES:

1. H-20 TRAFFIC BEARING - MAXIMUM EARTH COVER 5'.
2. MINIMUM CONCRETE STRENGTH = 4,000 PSI @ 28 DAYS.
3. MEETS REQUIREMENTS OF N.J.A.C. 7:9A
4. REINFORCEMENT: #5 REBAR @ 6" OCEW IN TOP & BOTTOM, 6x12 W3/W3 WIRE IN WALLS
5. WEIGHT: 7.2 TONS
6. 26.25 GALLONS PER VERTICAL INCH.



FRANKLIN PRECAST
 20 PARK DRIVE
 FRANKLIN, NEW JERSEY 07416
 www.franklinprecast.com

pH: (973) 827-7563
 Fax: (973) 827-4746
 sales@franklinprecast.com



DESCRIPTION: FRANKLIN PRECAST - H-20 TRAFFIC
 1,250 GAL. ROUND SEPTIC TANK

SCALE: NOT TO SCALE

DRAWN BY: AK

PART #
 1250 GAL.
 HD SEPTIC

DATE: 3/21/2017

CHECK BY: AY

THIS DRAWING IS THE PROPRIETARY PROPERTY OF FRANKLIN PRECAST. REPRODUCTION, DISCLOSURE OR USE OF ANY PART OF THIS DRAWING OR ANY INFORMATION THEREIN IS EXPRESSLY PROHIBITED WITHOUT PRIOR WRITTEN CONSENT OF FRANKLIN PRECAST.