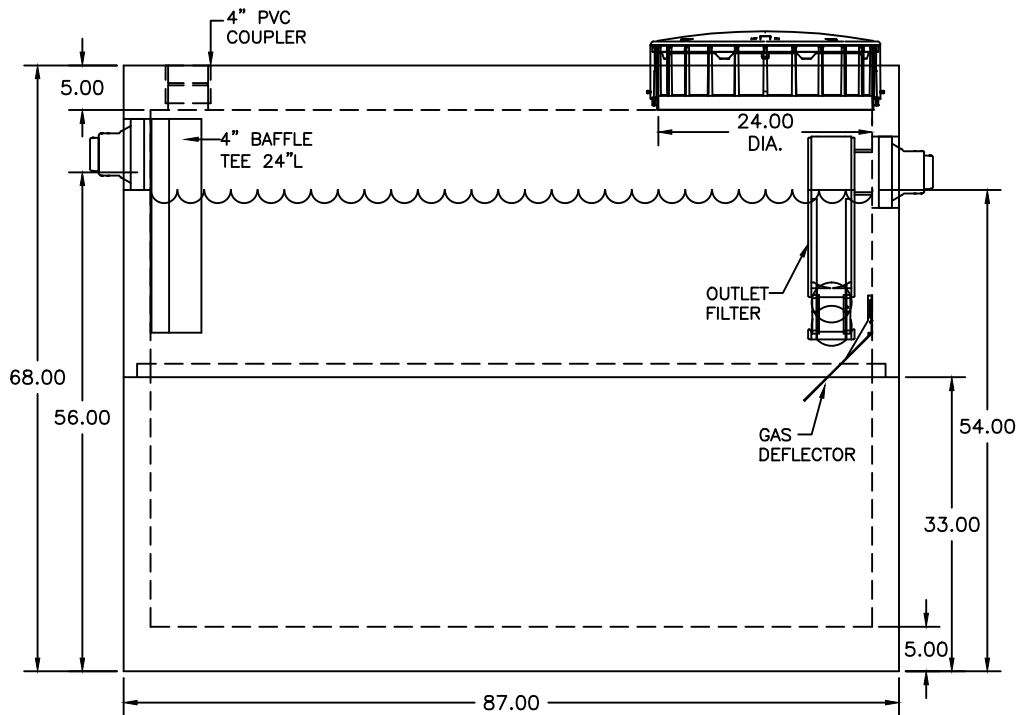
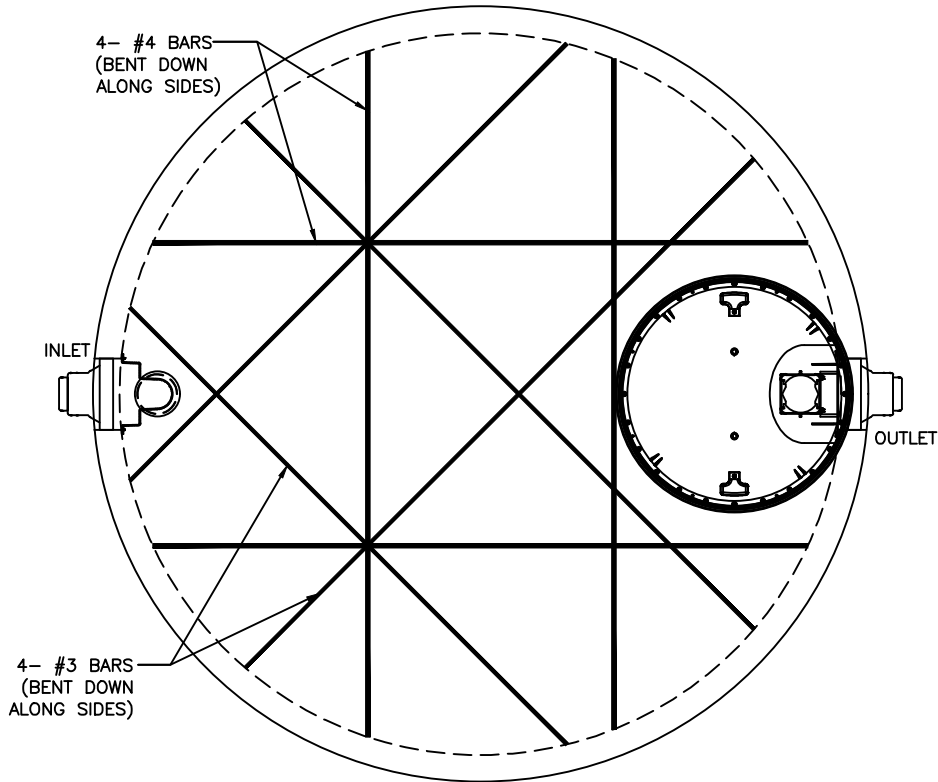


**NOTES:**

1. NON TRAFFIC BEARING – MAXIMUM EARTH COVER 4’.
2. MINIMUM CONCRETE STRENGTH = 4,000 PSI @ 28 DAYS.
3. MEETS REQUIREMENTS OF N.J.A.C. 7:9A
4. REINFORCEMENT: #3 & #4 REBAR IN TOP & BOTTOM, FIBER MIX USED THROUGHOUT.
5. WEIGHT: TOP= 2.1 TONS BOT.= 2.1 TONS
6. 22.32 GALLONS PER VERTICAL INCH.



FRANKLIN PRECAST  
 20 PARK DRIVE  
 FRANKLIN, NEW JERSEY 07416  
 www.franklinprecast.com

pH: (973) 827-7563  
 Fax: (973) 827-4746  
 sales@franklinprecast.com



**DESCRIPTION:** FRANKLIN PRECAST – NON TRAFFIC  
 1,000 GAL. ROUND 2pc SEPTIC TANK

**SCALE:** NOT TO SCALE

**DRAWN BY:** AK

**PART #**  
 1000 GAL.  
 NT 2pc

**DATE:** 3/21/2017

**CHECK BY:** AY

THIS DRAWING IS THE PROPRIETARY PROPERTY OF FRANKLIN PRECAST. REPRODUCTION, DISCLOSURE OR USE OF ANY PART OF THIS DRAWING OR ANY INFORMATION THEREIN IS EXPRESSLY PROHIBITED WITHOUT PRIOR WRITTEN CONSENT OF FRANKLIN PRECAST.