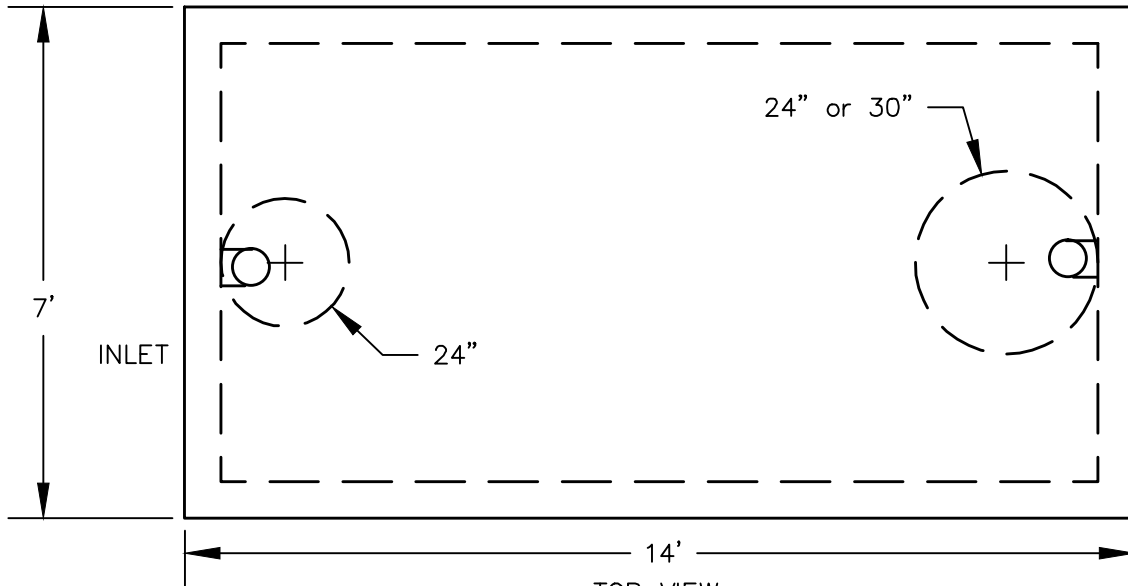


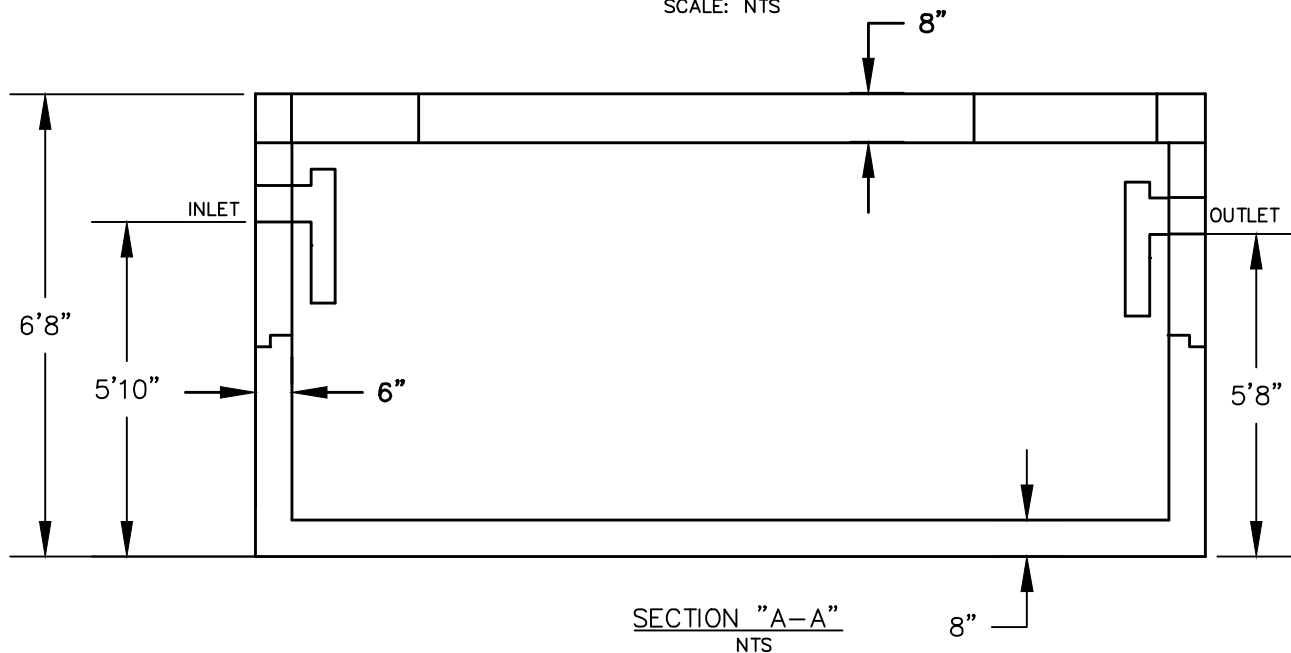
3,000 GALLON HD SEPTIC TANK

SPECIFICATIONS

1. MAXIMUM EARTH COVER 5' OVER TOP SLAB TRAFFIC LOADING.
2. MINIMUM CONCRETE STRENGTH = 4,500 PSI @ 28 DAYS.
3. REINFORCING PER ASTM A185 MIN. 1/2" COVER.
4. REINFORCEMENT: #5 REBAR 12" OCEW WALLS & BOTTOM,
#5 REBAR 6" OCEW TOP ADDITIONAL #5 REBAR AROUND OPENINGS
ALL REBAR GRADE 60



TOP VIEW
SCALE: NTS



SECTION "A-A"
NTS

APPROX WEIGHT: BASE: 9.4 TONS, MID SECTION: 4.2 TONS, TOP: 4.9 TONS

RAPID CAD
drafting & design services
cmccann13@gmail.com

FRANKLIN PRE-CAST

20 Park Dr. Phone: (973)-827-7563
Franklin, NJ Fax: (973)-827-4746
07416 sales@franklinprecast.com



DRAWN BY	CJM	PROJECT #
DATE	02-01-15	15-05
CAD FILE #	PC-3000HD	
SCALE	NTS	DWG SIZE