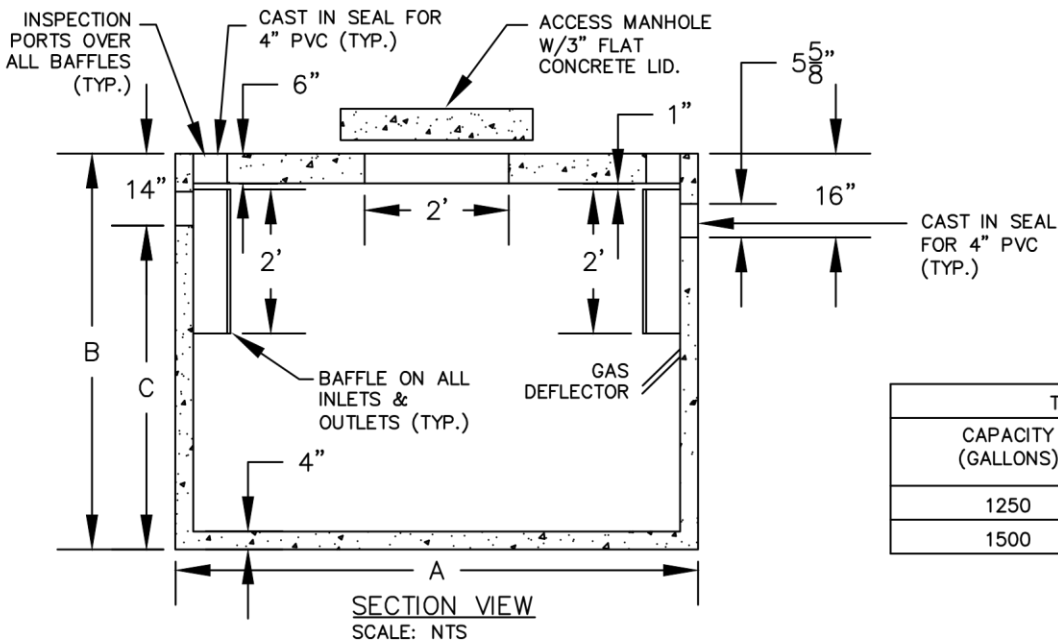
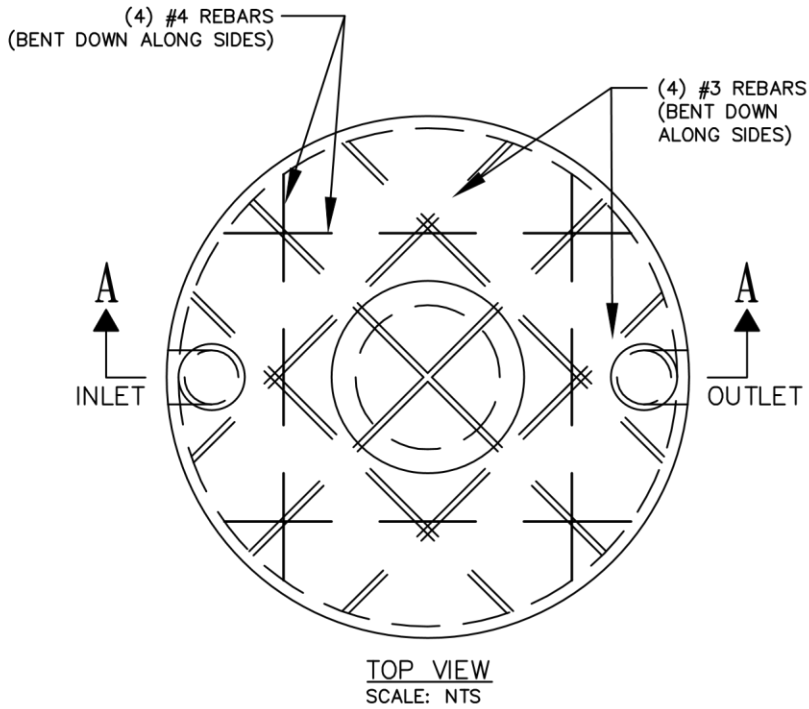


1,250 & 1,500 GALLON ROUND SEPTIC TANK

1. NON TRAFFIC BEARING – MAXIMUM EARTH COVER 4'.
2. MINIMUM CONCRETE STRENGTH = 4,000 LBS. + PSI.
3. MEETS REQUIREMENTS OF N.J.A.C. 7:9A
4. REINFORCEMENT: #3 & #4 REBAR IN TOP AND BOTTOM 6"x6"x10 GA. WIRE MESH IN SIDES.



TANK SCHEDULE			
CAPACITY (GALLONS)	DIMENSIONS		
	A	B	C
1250	8'	68"	54"
1500	8'	78"	64"

RAPID CAD
drafting & design services
cmccann13@gmail.com

FRANKLIN PRE-CAST
20 Park Dr. Phone: (973)-827-7563
Franklin, NJ Fax: (973)-827-4746
07416 sales@franklinprecast.com



DRAWN BY	CJM	PROJECT #
DATE	01-08-14	RC-44
CAD FILE #	PC-1250	
SCALE	NTS	DWG SIZE