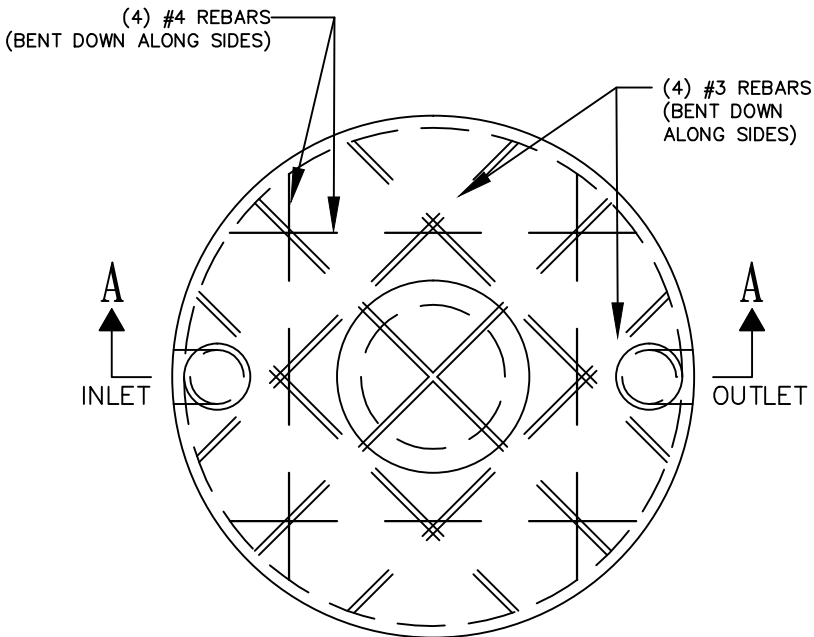
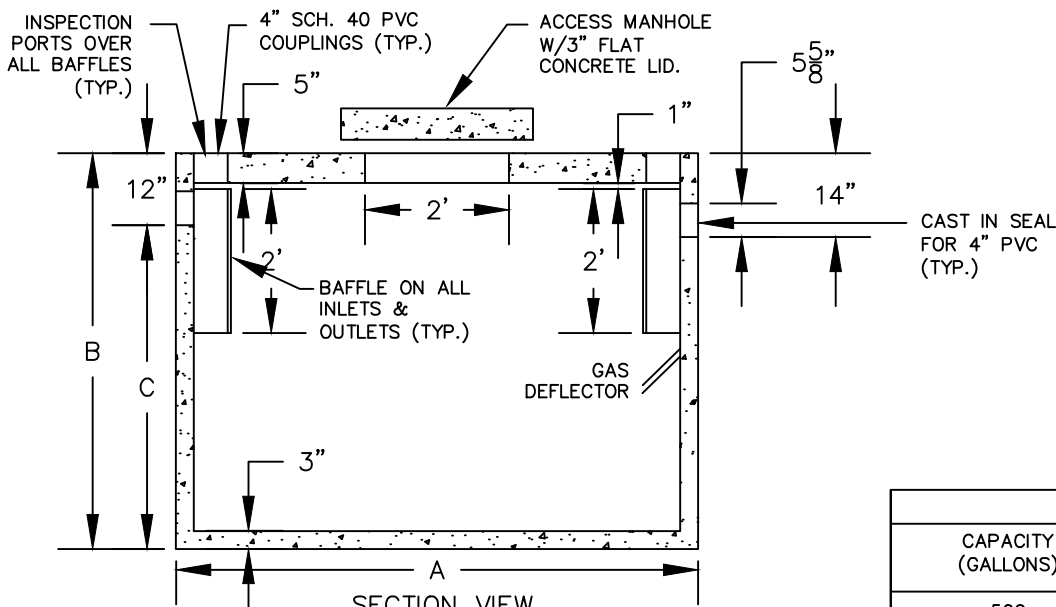


500 & 1,000 GALLON ROUND SEPTIC TANK

1. NON TRAFFIC BEARING – MAXIMUM EARTH COVER 4'.
2. MINIMUM CONCRETE STRENGTH = 4,000 PSI @ 28 DAYS.
3. MEETS REQUIREMENTS OF N.J.A.C. 7:9A
4. REINFORCEMENT: #3 & #4 REBAR IN TOP AND BOTTOM 6"x6"x10 GA. WIRE MESH IN SIDES.



TOP VIEW
SCALE: 3/8"=1"



SECTION VIEW
SCALE: 3/8"=1"

TANK SCHEDULE				
CAPACITY (GALLONS)	DIMENSIONS			WEIGHT (TONS)
	A	B	C	
500	7'-3"	4'-0"	3'-0"	3.7
1,000	7'-3"	5'-6"	4'-6"	4.4

RAPID CAD
drafting & design services
cmccann13@gmail.com

FRANKLIN PRE-CAST
20 Park Dr. Phone: (973)-827-7563
Franklin, NJ Fax: (973)-827-4746
07416 sales@franklinprecast.com



DRAWN BY	CJM	PROJECT #
DATE	01-08-14	RC-45
CAD FILE #	PC-1000	
SCALE	NTS	DWG SIZE