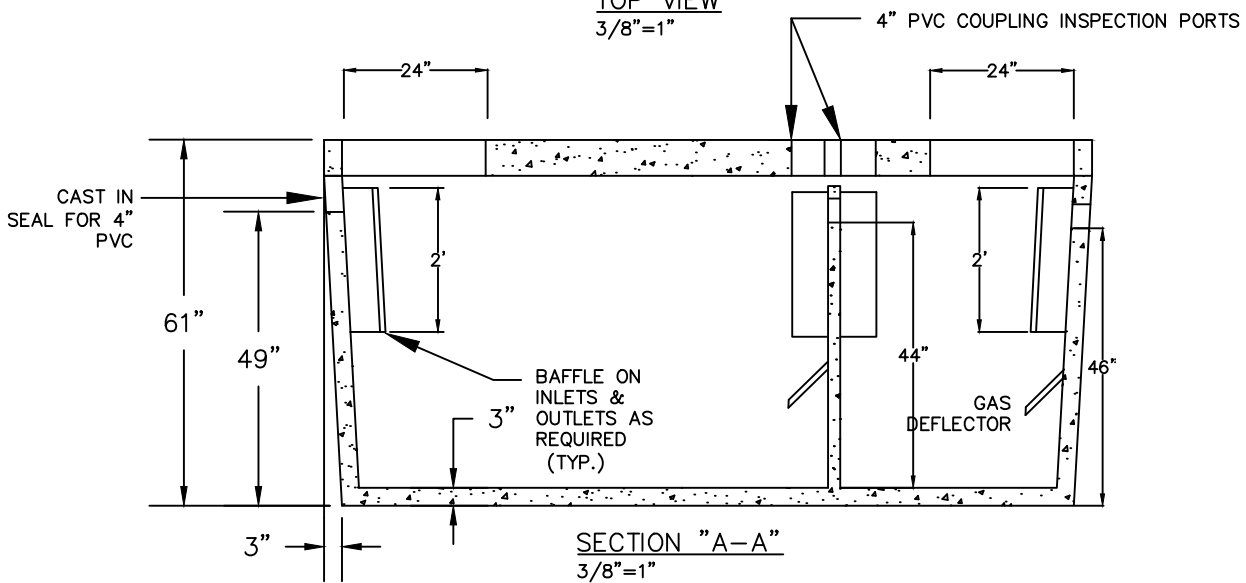
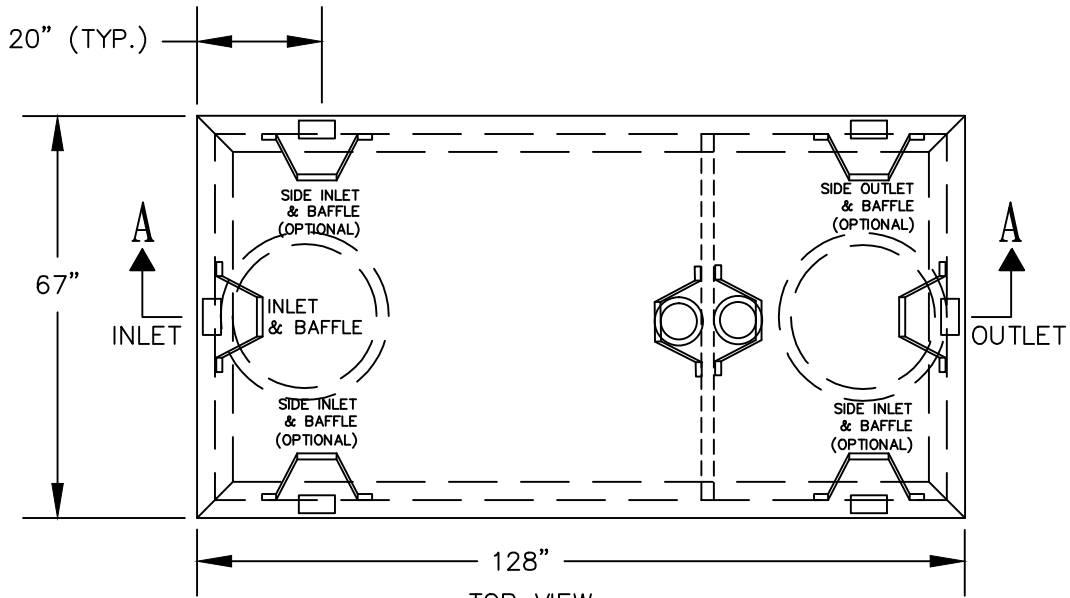


# 1,250 GALLON 1 & 2 COMPARTMENT SEPTIC TANK

NON TRAFFIC BEARING – MAXIMUM EARTH COVER 4'.  
 MINIMUM CONCRETE STRENGTH = 4,000 PSI @ 28 DAYS.  
 MEETS REQUIREMENTS OF N.J.A.C. 7:9A  
 REINFORCEMENT: #3 & #4 REBAR IN TOP AND BOTTOM 6"x6"x10 GA.  
 WIRE MESH IN SIDES.



APPROXIMATE TANK WEIGHT: 5,500 LBS LID WEIGHT: 4,400 LBS

RAPID CAD  
 drafting & design services  
 cmccann13@gmail.com

FRANKLIN PRE-CAST  
 20 Park Dr. Phone: (973)-827-7563  
 Franklin, NJ Fax: (973)-827-4746  
 07416 sales@franklinprecast.com



DRAWN BY	CJM	PROJECT #
DATE	01-05-13	RC-44
CAD FILE #	1250	
SCALE	NTS	DWG SIZE