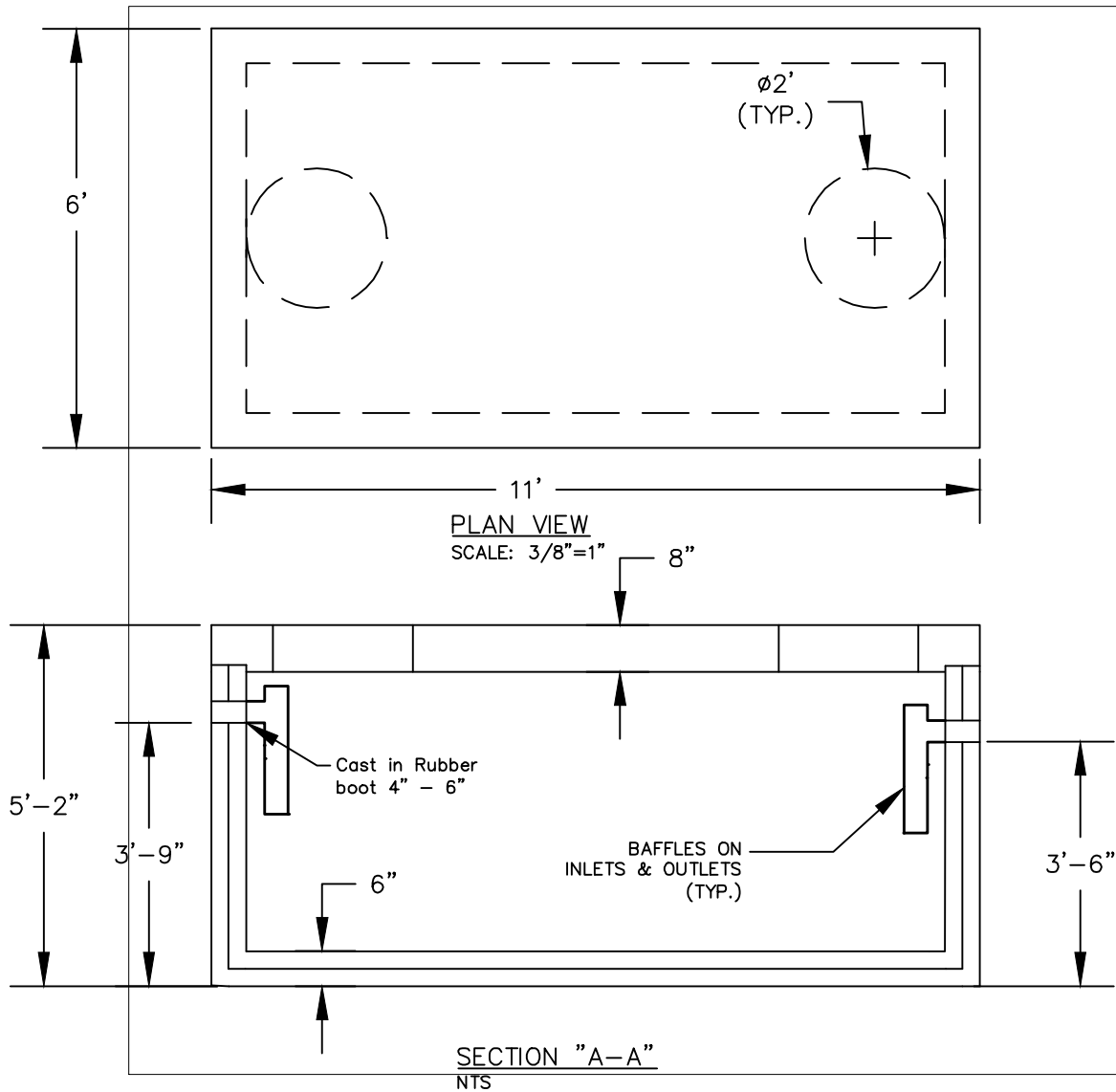


1,000 GALLON HEAVY DUTY SEPTIC TANK

SPECIFICATIONS

1. MAXIMUM EARTH COVER 5' OVER TOP SLAB HS-20 LOADING
2. MINIMUM CONCRETE STRENGTH = 4,500 PSI @ 28 DAYS.
3. ADMIXTURES AND PLASICIZERS PER ASTM C 150-92.
4. REINFORCING PER ASTM A185. MIN. 1/2" COVER
5. TOB SLAB SEALED WITH BUTYL ROPE MASTIC.



APPROXIMATE WEIGHT:
 TANK; 15,500 LBS.
 LID: 6,200 LBS.

RAPID CAD
 drafting & design services
cmccann13@gmail.com

FRANKLIN PRE-CAST

20 Park Dr. Phone: (973)-827-7563
 Franklin, NJ Fax: (973)-827-4746
 07416 sales@franklinprecast.com



DRAWN BY	CJM	PROJECT #
DATE	02-01-15	15-05
CAD FILE #	PC-1000HD	
SCALE	NTS	DWG SIZE